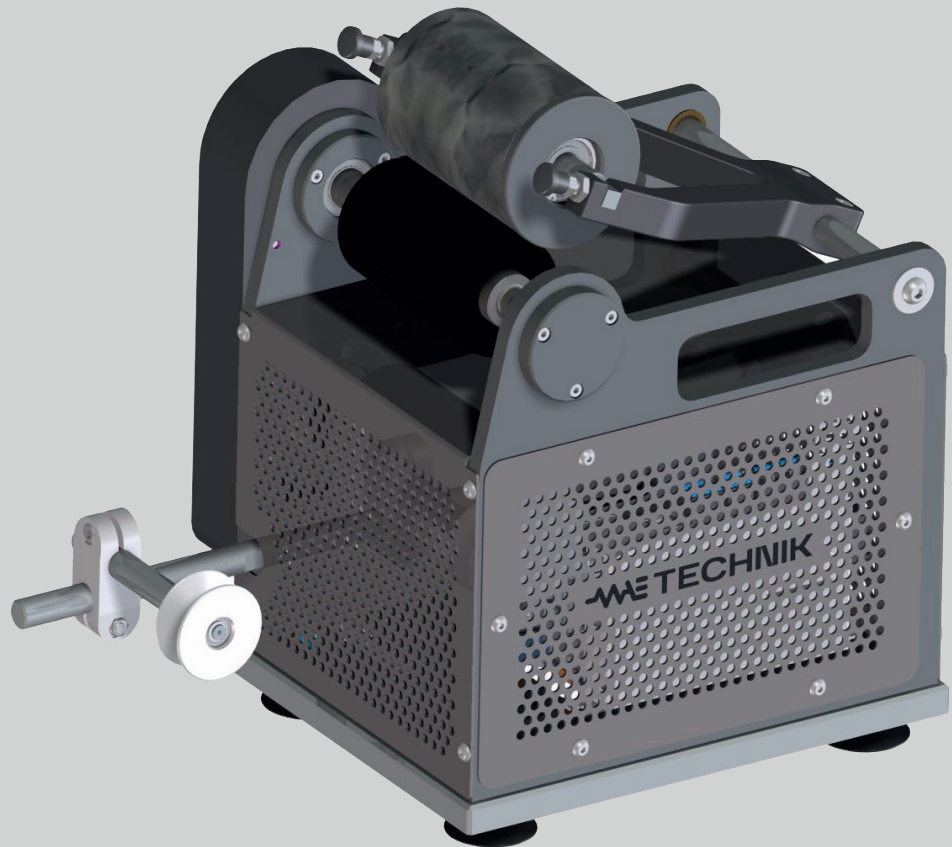


WND

WINDING MACHINE

The speed control of the winding machine can be performed in the following way:

- By operator input, when used as a stand-alone machine;
- By setting the same speed of last upstream roll, if integrated in the bench spinning line.

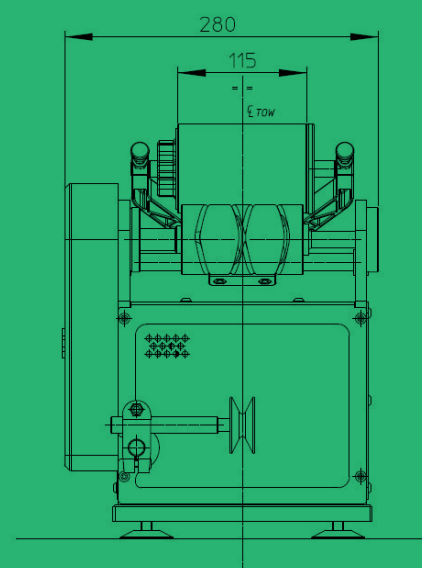
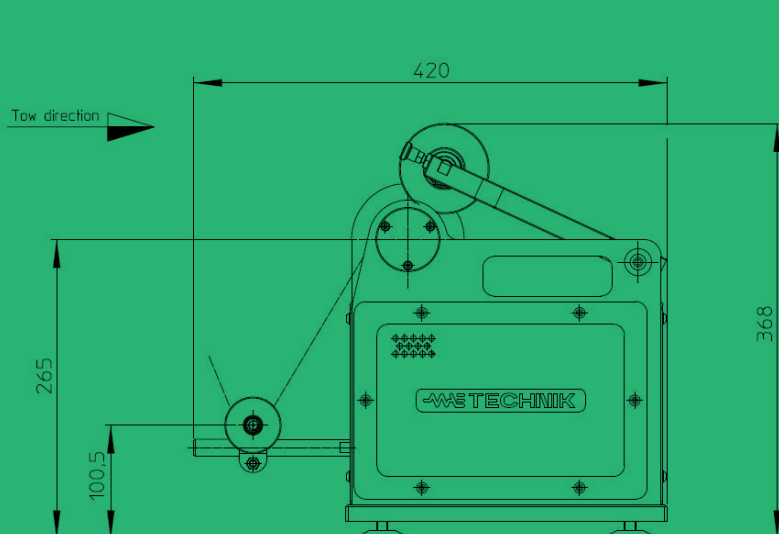


WND

MAIN CHARACTERISTICS

WINDING
MACHINE

Drive Motor Roll	Stepper motor
Motor power supply	48 V DC, 87 W
Cardboard tube inner diameter	73 mm
Cardboard tube outlet diameter	79 mm
Cardboard tube length	115 mm
Winder speed	Up to 50 m/min



MAE TECHNIK

MAE S.p.A.
Divisione Technik
Via 1 Maggio, 8/10 - 29017 - Fiorenzuola d'Arda (PC) Italy
T +39 0523 306103 - info@maetechnik.com
maetechnik.com